

Ultra pulse Co2 Fractional Laser

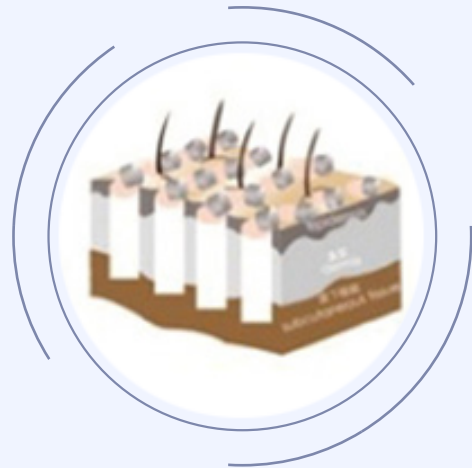
The Golden Standard of Ablative Skin Reconstruction
The King Power of Scar Smooth

SM10600KKLb

Exfoliative skin reconstruction



【TECHNICAL SCHEMATIC】



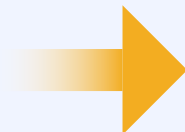
Target tissue skin becomes dark and aged before treatment



Use laser to scan and treat target tissue, heat can be transmitted from the superficial to the dermis of the skin.



Traumatic holes and holes between the normal tissue to produce thermal bridging, start the skin trauma repair mechanism (Inflammatory stage, proliferative phase, remodeling stage)



Produce a large number of new collagen, to the leather frame structure reconstruction, facial contour sculpture, wrinkles disappear, delicate skin texture, acne smoothing effect.

Treatment Theory

Fractional laser penetrates skin and forms tiny thermal channels. This creates some ablative and thermal effect only on these channels (a micro-injury) without damaging the surrounding tissue. The tissues surrounding the micro-injuries (about 15-20% of the treatment area) start the healing process. As the collagen remodels, the skin is tightened, scars and pigmented lesions are improved as well.

10600nm CO₂ laser acts on vagina mucosa and muscular tissue, generate extensive and regular thermal effect, get the instant tightening and lifting result. At the same time, It creates a large amount of extreme tiny peeling hole, which will improve the vagina lasting elasticity. These peeling channels will stimulate massive fibrocytes regeneration and youth the vagina. The patented comfort technology ensures non-invasive and safety, doctors and patients will choose the treatment instead of surgical method.

Application



Acne scar removal

Promote collagen regeneration, repair acne scar.



Full skin care

Full skin care (rejuvenation, tightening, shrink pores, anti-wrinkle& anti-aging)



Scar removal

Repair various scar (surgical scar, burning scar)



Stretch marks removal

Treatment of stretch marks, recover beautiful skin.



Vaginal tightening& beauty

Quickly tighten, beautify the labia



Vaginal rejuvenation and care

Promote secretion, eliminate dryness, deeply anti-aging



Application Range

01. Application Range of Fractional Mode:

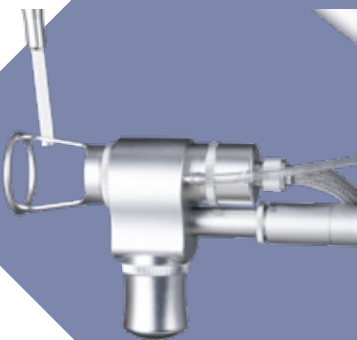
- Large pores, fine lines, skin tightening and whitening, skin loosen, deep wrinkles, stretch marks
- Various scars: burnt scars, acne scars, surgical scars and keloid
- Pigmented skin lesions: chloasma, freckles, age spots, sun spots, camls
- Reconstruction of Photo-damaged skin

03. Application Range of SM mode:

Vagina Loosing , Vulvar hypertrophy, Vulvar pigment lesions, Vaginitis, Mild and Moderate level Stress urinary incontinence, Vagina Health Care.

02. Application Range of CW and Ultra-pulse modes:

In cosmetic surgery, it can be adopted to incisions for Blepharoplasty, skin tags and ingrown nails, compound Nevus and intra dermal Nevus, plastic surgery, laparoscopy, gynecology, proctology, warts, xanthelasma and other epidermal nevi.



Details Display

A variety of tubes and treatment heads

Equipped with fixed focus tube, zoom tube and vaginal treatment head.

It can be changed according to different part and requirement.



Touch screen



CPG treatment head

Emergency Button



Key switch



Cutting treatment head



Vaginal treatment head



Fixed focus tube

Zoom tube

Scanner(CPG)

Aadvantages

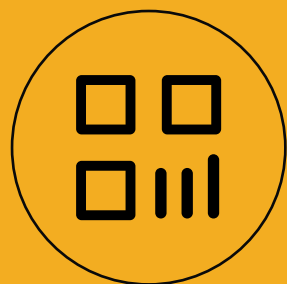
The stronger peeling ability, The deeper peeling depth



Less inflammation, simple postoperative care



Less damage to surrounding normal skin tissue



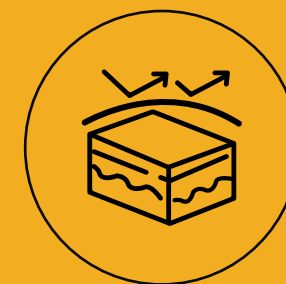
4 Working Modes



No Consumables



Easy to Operate



Less Thermal Damage

Case Comparison

Wrinkle



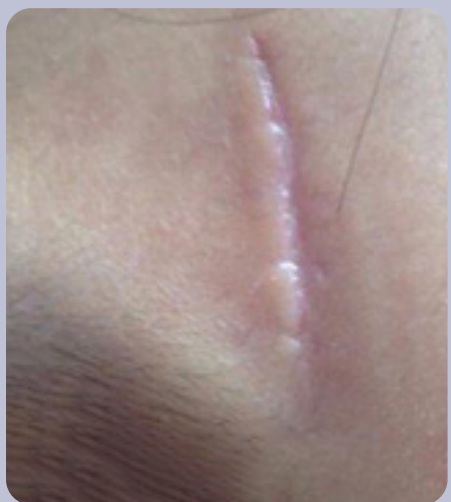
Acne scar



Acne



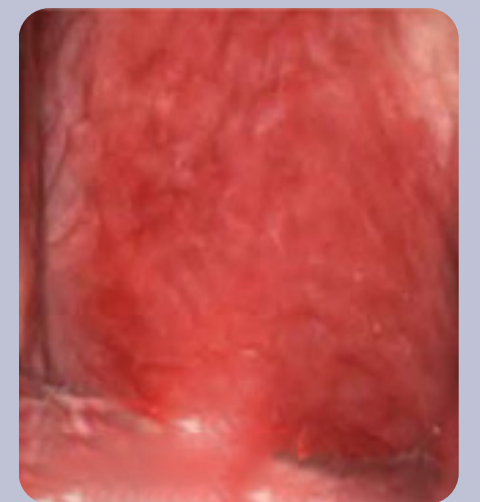
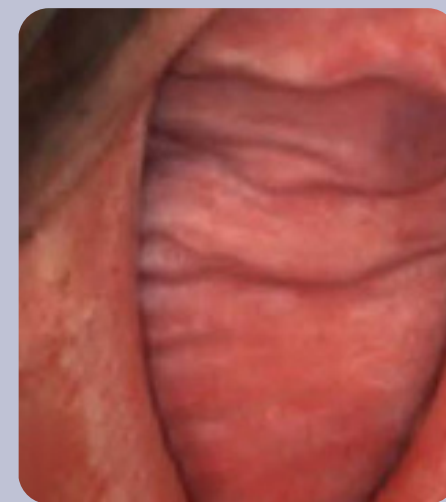
Scar



Stretch marks



Vaginal tightening&beauty



Specification

| | | | |
|----------------|---|------------------------|--|
| Model name | SM10600KKLB | Laser power | 40W |
| Pulse interval | 1ms-100ms | Articulated arm system | 7-joint articulated arm |
| Pulse energy | 2mj-200mj | Output graphic | Triangle, square, rectangle rhombus, round, linear |
| Pulse width | 0.067ms-0.67ms | Cooling system | Air cooling |
| Spot size | 80μm-2000μm | Package dimension | 95cm*45cm*120cm |
| Scanning mode | Disorderly & orderly fractional scanning | Gross weight | 98kgs |
| Output mode | Continuous, fractional, ultra pulse & vaginal treatment | Power supply | AC110/220V ± 10% 50Hz-60Hz |

Dodavatel v ČR: Globa retail s.r.o., sídlem Kozí 4 Brno 60200
IČ: 29371210, DIČ:CZ29371210
Telefon: +420608821197, email: info@globalretail.cz